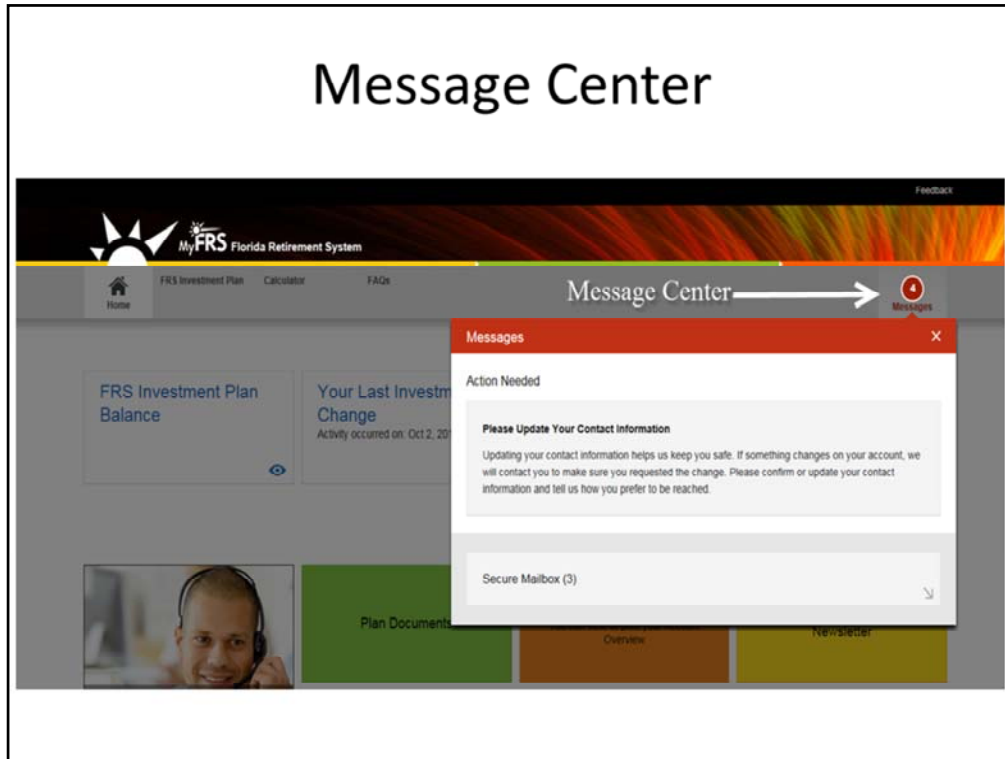


## **Alight Online Tour Updates**

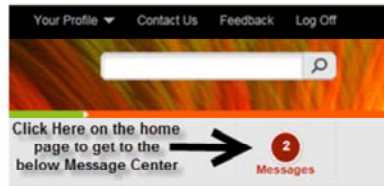
Welcome to a tour of Alight Solutions updates on the MyFRS.com website. Investment Plan members can access these pages by logging into MyFRS.com then selecting the Investment Plan button.

# Message Center



To see your quarterly account statement or other documentation that are sent to your secure mailbox, you can either click on the Secure Mailbox message that pops up after logging in, or click on the Messages button, which will take you to the Secure Mailbox location to view your Statement.

# Secure Mailbox



## Message Center

Alerts (1) **Secure Mailbox (2)**

**Filter By** All Messages **Sort By** Newest First

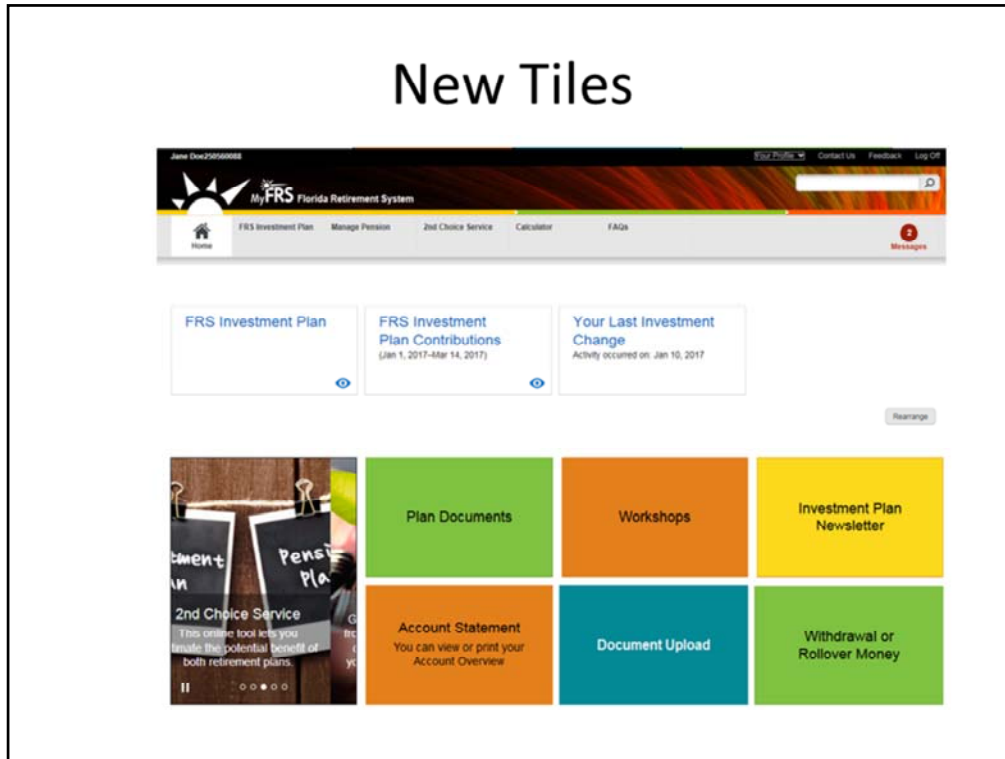
	Subject	Received
<input type="checkbox"/>	<a href="#">NEW - Quarter 3 2017 Account Statement</a>	Oct 18, 2017
<input type="checkbox"/>	<a href="#">NEW - Quarter 2 2017 Account Statement</a>	Jul 19, 2017

Delete Selected

[About Secure Mailbox](#)

The Secure Mailbox page allows you to receive secure documents if your delivery preference is electronic. Click on Messages to access this page.

# New Tiles



Two new tiles have been added:

1. Document Upload – You can now return documentation online. Save the document, and then choose the Document Upload option to send documents for processing. The option to return documentation by fax or mail is still available.
2. Withdrawal or Rollover Money – This tile now shows when you are eligible to take a payment and provides one click access to the Withdrawal or Rollover Money page.

## Online Experience Enhanced

- Account Activity
- Balance History
- Document Upload

MyFRS Financial Guidance Line 1-866-446-9377



As a result of some recent online upgrades online enhancements have been made to the following two pages:

- Account Activity
- Balance History

# Updated Online Experience

- Before

**Transaction History** Take Action and Learn ▾

**FRS Investment Plan** from 01-01-2017 to 11-09-2017, All Funds Change Date/Fund

Overview By Date By Fund Graph

Activity	Amount
Opening Balance	\$0.00
IF Employee	\$22.23
Withdrawals	-\$20,936.81
ABO Transfer In	\$20,444.63
Repayment of Invalid Distribution	\$20,936.81
Gain/Losses	\$579.35
Closing Balance	\$21,178.82

- After

**Account Activity**

Funds All Funds

Time Period Year to Date (2017) Download

Summary By Date By Fund Activity

**Your Account Activity Summary** >

FRS Investment Plan—All Funds  
Jan 1, 2017 to Oct 31, 2017

Opening Balance	\$0.00
IF Employee	+\$207.64
IF Employee	+\$188.76
Gain	-\$17.49
Closing Balance	\$404.09

Download

Under the FRS Investment Plan tab, one of the choices is Account Activity, which will provide the Opening Balance, Account Activity, and Closing balance for the time period requested.

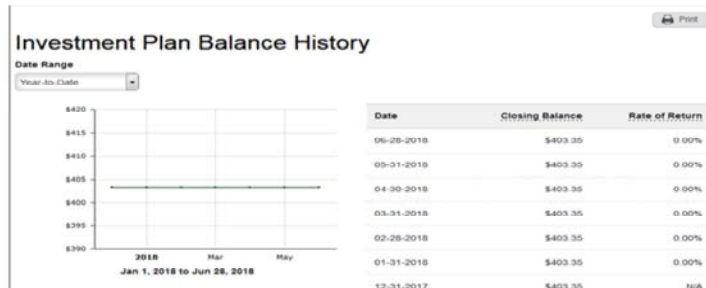
- This page view now adapts to a smartphone or tablet screen size.

# Updated Online Experience

- Before



- After

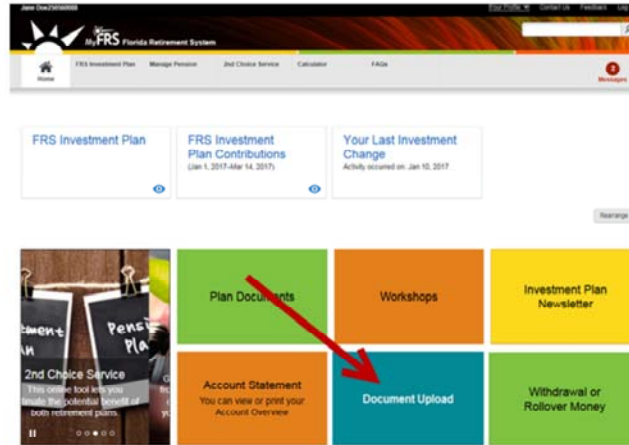


Under the FRS Investment Plan tab, one of the choices is Balance History, which will provide the plan balance over time.

- This page view now adapts to a smartphone or tablet screen size.

# Document Upload Enhancement

Clicking on Document Upload on the Home page will take you to the Document Upload Page.



Clicking on Document Upload on the Home page will take you to the Document Upload Page.




# Document Upload Enhancement

## Send Your Documents

Create an electronic version of your completed document and upload for faster results.

### Uploading is Quickest

- The accepted file types are: .jpg, .jpeg, .gif, .tif, .tiff, .png, .bmp, and .pdf.
- You can also upload photos taken with a mobile device.

Name	Document Type	Size	
Doc_Upload_Test_Rollover.pdf	--Choose One--	3.19 KB	 Remove
Total		3.19 KB of 10 MB limit	

[Add Document](#)

[Upload](#)

[Cancel](#)

 Fax  
888-310-5559

 Postal Mail  
FRS Investment Plan Administrator  
P.O. Box 785027  
Orlando, FL 32878-5027

- On the “*Send Your Documents Page*” there can be up to 4 options to choose from for Document Type: “Rollovers”, “Other”, “Name Change Form”, or “2<sup>nd</sup> Election Form”
- The Name Change Form and 2<sup>nd</sup> Election Form option will be visible if that document has been requested on the system.

### To send a document:

- Click on Add Document
- Choose the Document you want to add
- Choose the Document Type from the drop down
- Click Upload

# Document Upload Enhancement

## Completed Successfully

Your documents will be reviewed soon. You'll be notified if more information is needed.

### Summary of Your Request

Name	Document Type	Size
Name Change Form.png	Name Change Form	14.45 KB

Return to [Send Your Documents](#)

After the document is uploaded a "Completed Successfully" message will be displayed.

## **Alight Online Tour Updates**

Thank you for taking this tour of the Alight Solutions pages on the MyFRS.com website. If you have any questions about any of these pages, please call Alight Solutions at 1-866-446-9377, Option 4.